

Jayco | 2024 White Hawk Travel Trailer

# WHITE HAWK

LIGHTWEIGHT LUXURY



**2+3**  
YEAR | YEAR  
WARRANTY



# INTERIOR DESIGN



## VINTAGE FARMHOUSE



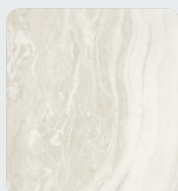
Main Wood



Accent Wood



Floor



Countertop



Main Fabric



Accent Fabric

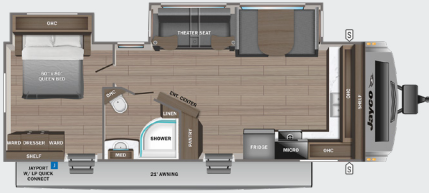




# WHITE HAWK

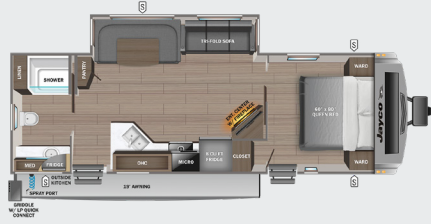
26FK

OPTIONS: C, D



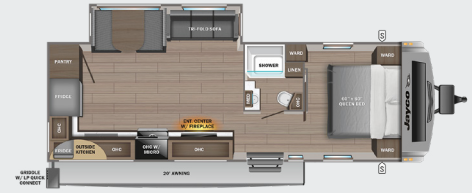
27RB

OPTIONS: A, B, C, D



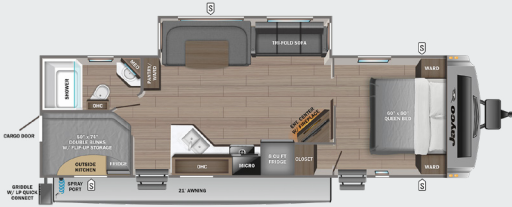
27RK

OPTIONS: A, B, C, D



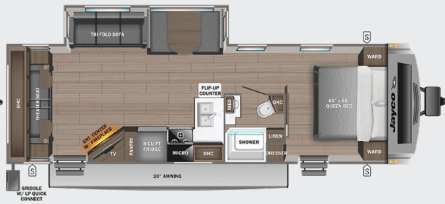
29BH

OPTIONS: A, B, C, D



29RL

OPTIONS: B, C, D



32BH

OPTIONS: A, B, C, D



32QBH

OPTIONS: A, B, C, D



32RL

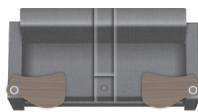
OPTIONS: B, C, D



	STORAGE
<b>MICRO</b>	MICROWAVE
<b>OHC</b>	OVERHEAD CABINETS
<b>FRIDGE</b>	REFRIGERATOR
<b>WARD</b>	WARDROBE

## OPTIONS

A



Theater Sofa

B



King Bed

C



Table & Chairs

D



Table, Chairs & Ottoman

# STANDARDS & OPTIONS

## EXTERIOR

1.5 in. fresh water drain valve  
 2 in. Stronghold VBL™ floor with 2 lb. density foam  
 Aerodynamic, rounded front profile with aluminum framing  
 American-made frame with integrated A-frame  
 Automotive-style aluminum rims  
 Battery quick-disconnect  
 Black tank flush  
 Bumper-mount bracket for 17 in. griddle  
 Detachable power cord  
 Exterior TV bracket with 120V and cable hook-ups  
 Factory installed rear roof ladder  
 Galvanized steel and impact resistant wheel wells  
 Inverter pre-wire (2 bedroom nightstand outlets, main TV and outlet for outside kitchen fridge)  
 Keyed-Alike™ locking system  
 Magnum Truss™ Roof System with limited lifetime warranty  
 Marine grade exterior speakers with blue LED accent lighting  
 Modern graphics package with dual-colored sidewall  
 Mounted camera bracket for pre-wired side and rear back-up prep  
 Outdoor camp kitchen with galvanized steel bases (select models)  
 Outside shower (only on models without outside camp kitchen)  
 Rock Solid Stabilizer System  
 Slam latches on front pass-through storage doors  
 Spare tire with cover  
 Stronghold VBL™ walls with double-sided Azdel composite (sidewalls, rear walls and slide out boxes)  
 Swing-out entry door assist handle

## INTERIOR

4 in. high-density dinette cushions with vinyl backing  
 4 in. Teddy Bear soft-touch bunk mats (select models)  
 60 x 80 in. residential queen beds (60 x 76 in. x Murphy bed models)  
 75 lb. full extension drawer guides  
 Barreled interior ceiling up to 81 in. of interior height  
 Bathroom skylight  
 Decorative backsplash  
 Decorative roller shades with reflective barrier  
 Directional and closeable A/C vents  
 Electric fireplace  
 Gas-strutted under bed storage (most models)  
 Handcrafted, hardwood door/drawer fronts  
 Hidden-hinged cabinet doors  
 High output auto-ignition propane gas furnace  
 LED lighting throughout  
 Plywood dinette, bed, bunk and shower/tub bases  
 Powered roof vents in bathroom and main bedroom (most models)  
 Residential style kitchen countertops  
 Residential vinyl flooring throughout  
 Screwed and glued cabinet stiles  
 USB charging ports (multiple locations throughout)

## CUSTOMER VALUE PACKAGE (MANDATORY)

15,000 BTU roof-mounted A/C  
 30 lb. propane gas bottles with auto-regulator and ABS cover  
 39 or 50 in. Smart LED TV  
 55 gallon fresh water tank  
 AM/FM/Bluetooth® stereo with roof-mounted speakers  
 American-made nitro-filled Goodyear® radial tires with self-adjusting electric brakes

Bathroom skylight  
 Max-length power awning with LED light  
 Microwave  
 On-Demand 60,000 BTU water heater  
 Oven with 3-burner recessed cooktop with glass cover  
 Porcelain foot flush toilet  
 Power tongue jack  
 Showers with solid glass enclosures

## LUXURY PACKAGE (MANDATORY)

Climate Shield™ 0-100° tested weather insulation package  
 Dark tinted, frameless safety glass windows  
 Dual-hinge 10 cu. ft. 12V fridge  
 Front molded fiberglass cap with automotive-style windshield and blue LED accent light strips  
 Kitchen skylight with shade  
 LCI Solid Step fold-down aluminum tread steps on main entry door  
 MAXXAIR® power roof vent (main living area)  
 Overlander 1 Solar Package: (1) 200W solar panel and 30-amp digital controller

## OPTIONS

120V heated tank pads  
 17 in. outside griddle (select models)  
 2nd 15,000 BTU direct-dump AC in bedroom  
 50-amp service with 2nd A/C prep  
 72 x 80 in. king bed in place of 60 x 80 in. queen bed (excludes 26FK)  
 JAYCOMMAND® Smart RV System with TPMS  
 Overlander 2 Solar Package: (2) 200W solar panels, 30-amp digital controller and 1,800W inverter  
 Power stabilizer jacks

\*Indicates split tanks

FLOORPLAN	TOTAL EXTERIOR LENGTH	EXTERIOR WIDTH	EXTERIOR HEIGHT (WITH A/C)	INTERIOR HEIGHT	UNLOADED VEHICLE WEIGHT	DRY HITCH WEIGHT	GVWR	CARGO CARRYING CAPACITY	FRESH WATER CAPACITY	GRAY WASTE WATER CAPACITY	BLACK WASTE WATER CAPACITY	SLEEPING CAPACITY
26FK	32' 1"	8' 0"	11' 3"	6' 9"	6,820	745	8,400	1,580	55	61*	30.5	2-3
27RB	32' 10"	8' 0"	11' 4"	6' 10"	6,750	770	8,000	1,250	56	61*	30.5	3-5
27RK	32' 10"	8' 0"	11' 3"	6' 10"	6,500	720	8,000	1,500	55	61*	30.5	3-5
29BH	34' 9"	8' 0"	10' 5"	6' 9"	6,865	815	8,500	1,635	55	61*	30.5	7-9
29RL	35' 9"	8' 0"	11' 3"	6' 9"	6,930	820	8,500	1,570	55	61*	30.5	4-6
32BH	38' 0"	8' 0"	11' 4"	6' 9"	8,140	965	9,500	1,360	56	71*	61*	7-9
32QBH	38' 0"	8' 0"	11' 3"	6' 9"	8,200	1,035	9,750	1,550	55	57	30.5	8-10
32RL	36' 10"	8' 0"	11' 2"	6' 9"	7,530	765	9,000	1,470	55	71*	30.5	3-5

Meet your Jayco Dealer



Scan QR code for specification definitions

Some specs at the time of print may include estimates. For the most updated information, please visit [Jayco.com](http://Jayco.com)

Jayco, Inc. | P.O. Box 460 | Middlebury, IN 46540

See dealer for further information and prices. All information in this brochure and on [www.jayco.com](http://www.jayco.com) is the latest available at the time of publication approval. Jayco reserves the right to make changes and to discontinue models without notice or obligation. Photography may show optional equipment or props used for decoration purposes only. RVs built for sale in Canada may differ to conform to Canadian codes. JAYCO and the JAYCO BIRD IN FLIGHT are registered trademarks of Jayco, Inc. Printed in USA 10/23 ©2023 Jayco, Inc.



Jayco - Part of Jayco Family of Companies